

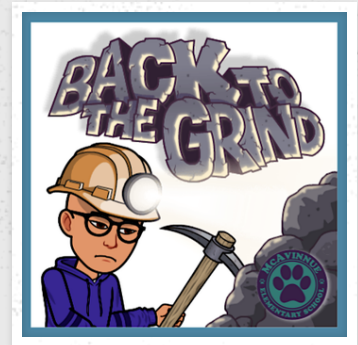
# The Lion's Roar

MCAVINNUE'S COMMUNITY NEWSLETTER: WEEK OF FEBRUARY  
27TH

## MCAVINNUE'S PRINCIPAL'S MESSAGE

Hello McAvinnue Community!

I hope that everyone is having a fantastic Winter Break with family and friends! It is always nice to get some time away to relax and recover. Let's talk about the weather for a second...I believe we have witnessed and experienced the full weather spectrum that New England can offer all in a week. Mild days...colder days...rain...snow...that basically sums everything up for sure!



When we all return on Monday, February 27th, things will begin to pick up the pace some as we enter the month of March. This will be the first full month of school that we have without any holiday or vacation days since we launched the 2022-2023 academic school year. March will also yield report card distribution for PreK - Grade 4 students as well as the second round of Parent/Teacher Conferences. For a list of things to be aware of in the month of March, please see the section called "Upcoming News" in this Smore newsletter and mark your personal calendars!

On the Friday before we left for Winter Break, we had a great musical showcase for our Grade 2 students! They performed "Colors: We're Better Together"...and did an amazing job! Check out the picture and video from the all school meeting performance. So amazing!

Here are a few items that you need to be aware for this up and coming week. Please mark your calendars for the following events and activities that will occur at McAvinnue:

- **Monday, February 27th - McAvinnue Reopens**

You will find additional details for the events and activities list above in this edition of McAvinnue's "Lion's Roar" Community Newsletter.

As usual, we are looking forward to another amazing week at the "best school that we all know"!

If you have any questions, please don't hesitate to contact the Main Office at McAvinnue or send Mr. Domina a message a [mdomina@lowell.k12.ma.us](mailto:mdomina@lowell.k12.ma.us).

## "COLORS: WE'RE BETTER TOGETHER" - GRADE 2 MUSICAL SHOWCASE

"Colors: We're Better Together" - Grade 2 Musical Showcase 2.17.2023





## PARENT NEEDS ASSESSMENT SURVEY

As we develop our Quality Improvement Plan (QIP) for the 2023-2024 School Year, McAvinnue's School Site Council would like to hear from you! Please consider taking the short survey below so we can get an idea of what is important to you in meeting the needs of your child while they are at school.



The survey can be translated to multiple languages by following the steps below:

1. Right click anywhere on the form and several options will appear.
2. Click on "Translate" or "Translate to." Another box will appear in the upper right corner.

3. If the language you want to translate to does not appear, click on the three vertical dots and select "Choose another language."
4. Click on the drop-down menu, choose the desired language and click the "translate" button.
5. Proceed with completing the form.

Please click the link below to complete the survey.

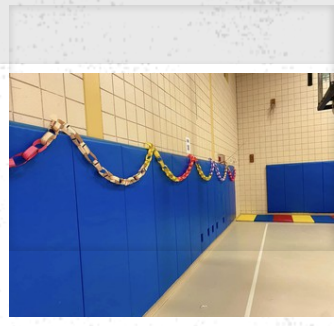
<https://forms.gle/UhwVBH7aFJCcXZUGA>

## MCAVINNUUE'S WEEK IN REVIEW



### MCAVINNUUE'S "ARTIST OF THE WEEK"

McAvinnue's "Artist of the Week" is Daniel in Room 309! Daniel made dozens of Valentines with the Printmaking Technique we learned. He made so many extras that he had time to experiment with colors and patterns! Amazing work!



### MCAVINNUUE'S KINDNESS CHAIN

McAvinnue's "Kindness Chain" on full display in our gym! Every student created a link to this chain with a way that they could be kind. We have amazing students!



### JIJi'S FEBRUARY FREEZE!

Look who made an appear at McAvinnue this past week during JiJi's "February Freeze"! This was a super fun and exciting incentive for the top 5 winning classrooms from McAvinnue's ST Math "Winter Waddle" Challenge.

JiJi joined in on the game action that was lead by Mr. Domina and Mrs. Bellerose. Students had a chance to play 3 different games in the gym first thing in the morning!

## ST MATH GOOD NEWS: 100% PROGRESS & BEYOND!

## WEEK OF FEBRUARY 27TH



# McAvinnue's ST Math Progress Champions



**Amara - Room 207**



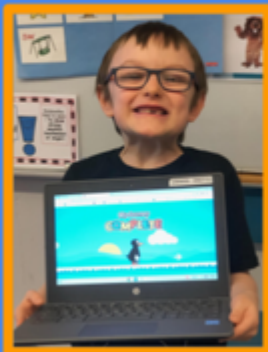
**Doro - Room 301**



**Jenna - Room 310**



# McAvinnue's ST Math Progress Champions



**Konnor - Room 201**



**Marley - Room 302**



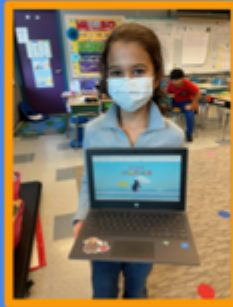
**Wyatt - Room 302**



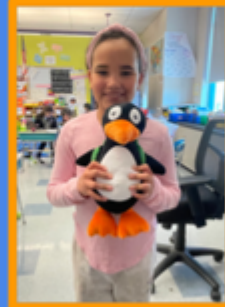
## McAvinnue's ST Math Progress Champions



**Davian**  
**Room 101**



**Emilee**  
**Room 308**



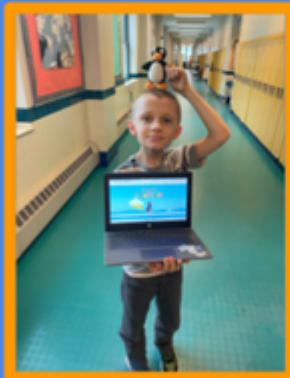
**Maria Klara**  
**Room 304**



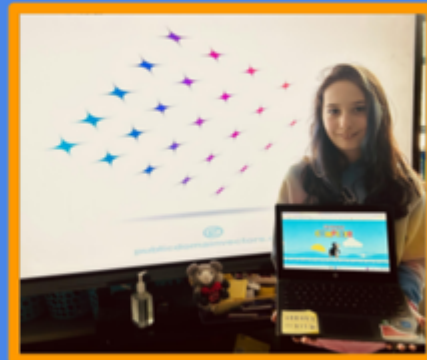
**Sina**  
**Room 308**



## McAvinnue's ST Math Progress Champions



**Jackson**  
**Room 304**



**Olivia**  
**Room 308**

**ST MATH WEEKLY UPDATE: WEEK OF FEBRUARY 27TH**

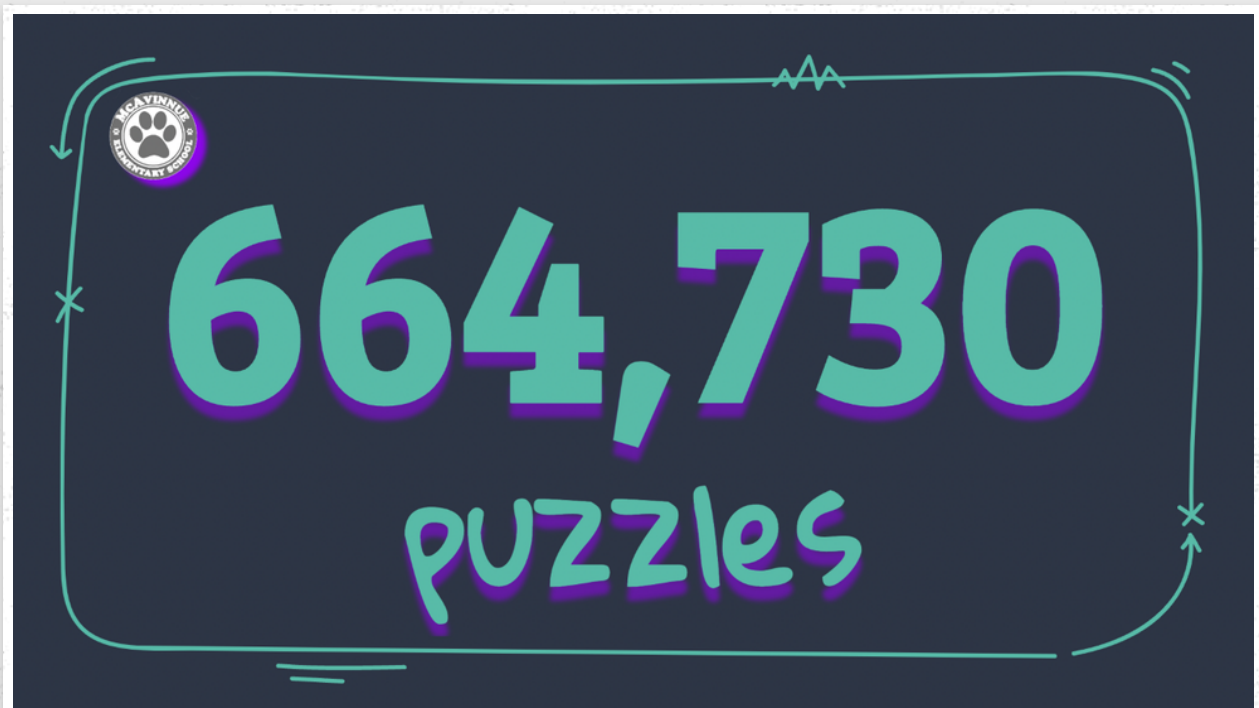


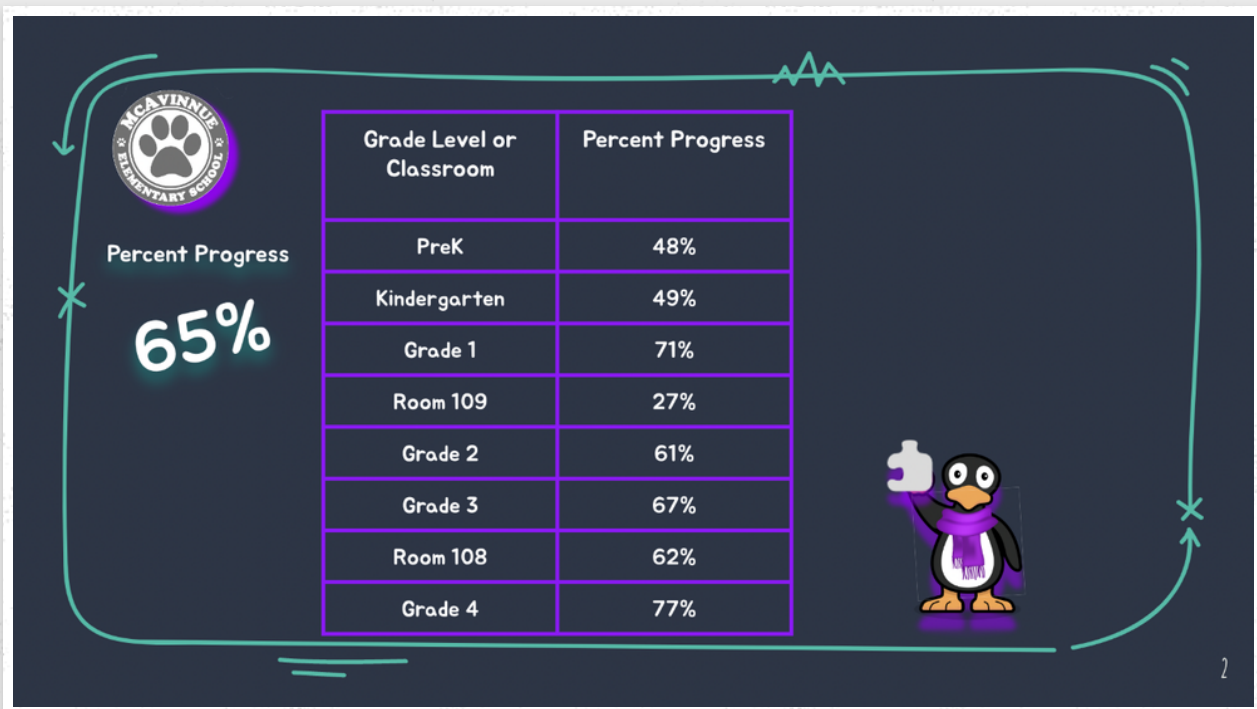
# ST Math®

What an amazing month of puzzle play for McAvinnue! We have completed near 664,730 puzzles have been solved by students! It was April of 2022 when McAvinnue students reached this point last year! This year's puzzle count is nearly 2 months ahead of last year's count!

Percent Progress Averages continue to impress! Our school reached 65% Percent Progress! Our school goal is to reach 80% progress by the end of May. This goal will most likely be reached by April break. It also looks very likely that we will reach 100% progress as a school by the end of this school year.

JiJi and McAvinnue are always ready for the next challenge! March Mathness is heading your way. The details of this ST Math Challenge are being finalized. Be on the lookout for brackets and basketballs.





## McAVINNUE'S STUDENT DAILY ATTENDANCE POLICY



Please click the links below to access McAvinnue's Student Attendance Policy for the 2022-2023 academic school year. For your convenience, we have included the policy flyer in multiple languages.

If you have any questions, please don't hesitate to reach out directly.



Attendance English.pdf

[Download](#)

1.2 MB



Attendance Spanish.pdf

[Download](#)

1.7 MB



Attendance Portuguese.pdf

[Download](#)

1.8 MB

## UPCOMING EVENTS



Here are important dates to remember for the end of February and during the month of March:

- Monday, February 27th - McAvinnue Reopens
- Thursday, March 2nd - Read Across America Day
- Tuesday, March 7th - "Top Secret Science" Family Night @ 5:15 PM - 6:45 PM
- Wednesday, March 8th - Early Release Day: Students Dismissed @ 1:30 PM (No PreK Classes In Ms. Annie's Room)
- Wednesday, March 15th - Grade 4 Visits The Wang Middle School: Play Showcase @ 10:00 AM
- Friday, March 17th - St. Patrick's Day
- Monday, March 20th - Grade 3 Field Trip: Lowell Boott Mills (2 Classes)
- Monday, March 21st - Grade 3 Field Trip: Lowell Boott Mills (2 Classes)
- Wednesday, March 22nd - Report Card Distribution (PreK - Grade 4)
- Thursday, March 23rd - Parent/Teacher Conferences @ 3:45 PM - 5:45 PM

## CHECK OUT MCAVINNUE'S "VIRTUAL" MORNING ANNOUNCEMENTS!



Like we had successfully done last school year, a new edition of McAvinnue's "Virtual" Morning Announcements will be presented to our students on Monday, Wednesday, and Friday each week. We will continue to use Tuesday and Thursday each week to be used for "Open Circle"....our Social Emotional Learning (SEL) program that focuses on community building, prosocial decision making, and appropriate responses to daily stressors both within the school and home settings.

This will continue to be a great way to bring our school together each day focusing on the same message to get the energy, commitment, and engage up before we launch into another great day at "the best school we all know".

You can check out each edition of McAvinnue's Morning Announcements on our YouTube channel using the link below.

[https://www.youtube.com/channel/UC7hxiBuRjqgfASl\\_RLMleQ](https://www.youtube.com/channel/UC7hxiBuRjqgfASl_RLMleQ)

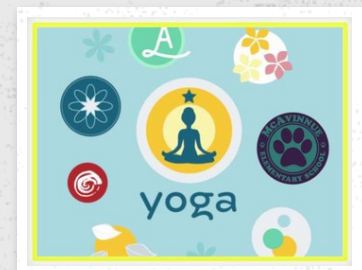
If you want a peek of the latest edition of McAvinnue's "Virtual Morning Announcements", check out the video below!

### McAvinnue's Morning Announcements 2.17.2023

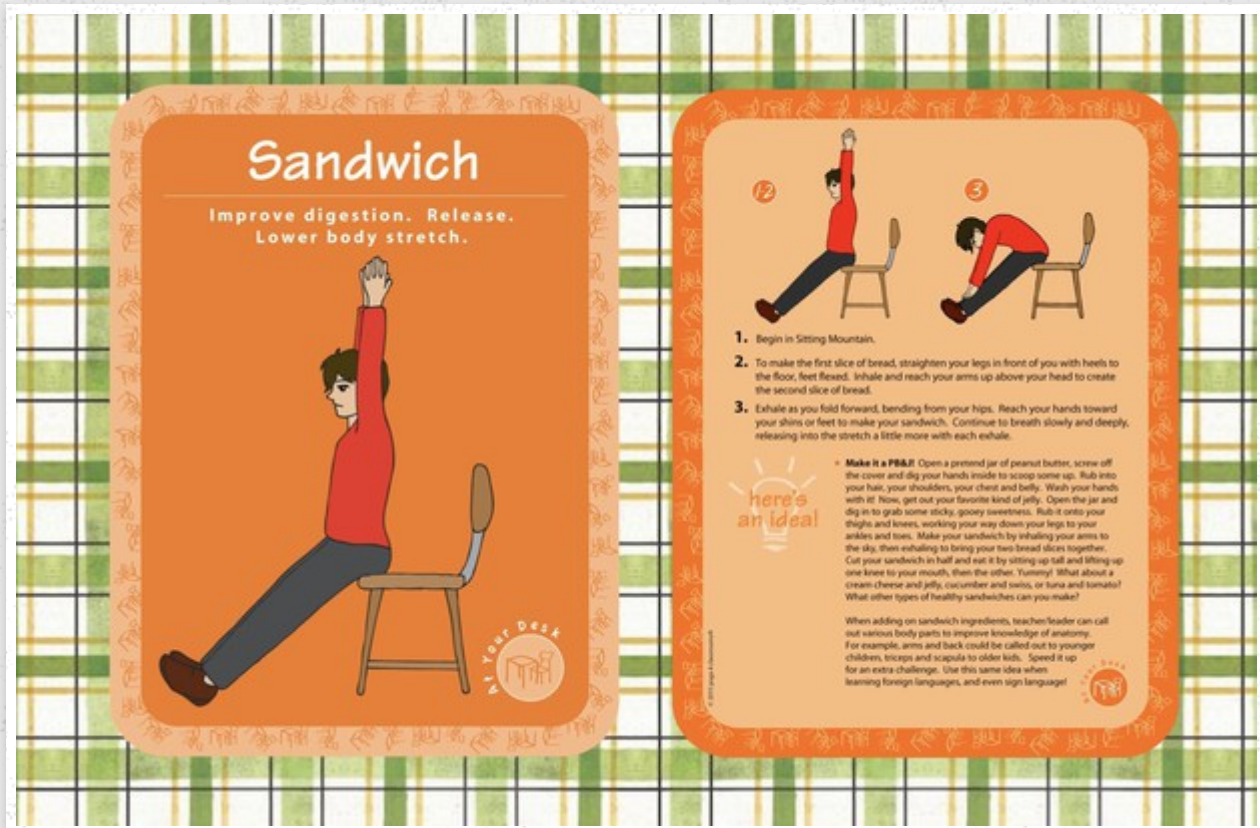


## McAVINNUE'S YOGA POSE OF THE WEEK: "SANDWICH"

We will practice a brand new pose called the "Sandwich" for this up and coming week after the Winter Break. This new pose will allow us to release tension through a lower body stretch that will improve your digestion! We will practice the "Sandwich" pose daily during our "Virtual" Morning Announcements during this up and coming week on Monday, Wednesday, and Friday.



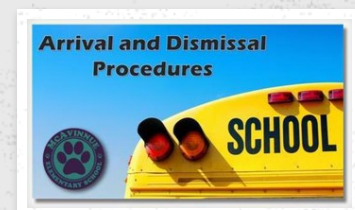
You can get an early head start and practice this technique before we launch into another exciting week!



## DROP-OFF & PICK-UP LOGISTICS

### Drop-Off Logistics

- Arrival begins at 9:10 AM each day. The late bell rings at 9:25 AM.
- Please pull up to the 4th Avenue side of the building when dropping off your child.
- As you approach the 4th Avenue sidewalk, a faculty member will greet and support getting your child safely out of the vehicle.
- This area is a drop off area ONLY. You will not be permitted to park in this location.
- Please be sure to drive all the way down to the end of the sidewalk so we can fit as many vehicles in this location as possible.
- Ensure your child is ready to go and do not get out of the car so we can keep traffic moving.
- Students accessing our CSA program will be dismissed out the 4th Avenue door near the rear of the school building by the exit driveway.
- Large bus students will enter using the back door located in the rear of the school building.
- Small bus and van transportation students will use the 4th Avenue door near the rear of the school building by the exit driveway.



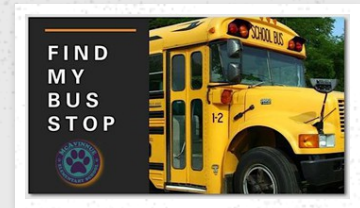
### Morning Lining Up Locations

- Grade 1, 3, and 4 students will use the Main Door to enter the school building.
- Grade 2 will use the 4th Avenue doorway near the front of the school to enter the building.
- PreK & Kindergarten will use the Early Childhood door to enter the building. This door is located to the right of McAvinnue's Reading Garden and to the left of the Main Door.

### Pick-Up Logistics

- Grade 1 will be dismissed out the Main Door.
- Grades 2, 3, and 4 will be dismissed out the 4th Avenue door near the front of the school.
- Kindergarten students will be dismissed out the Early Childhood door. This door is located to the right of McAvinnue's Reading Garden and to the left of the Main Door.
- Students accessing our CSA program will be dismissed out the 4th Avenue door near the rear of the school building by the exit driveway.
- PreK students will be dismissed out the 4th Avenue door near the rear of the school building by the exit driveway. Please contact Ms. Annie for the specific dismissal time.

## SCHOOL BUS TRANSPORTATION INFORMATION



School bus transportation is provided to students in grades K-4, who live greater than .75 mile from their residence or alternate address to their assigned school. Middle school students (grades 5-8) must live greater than 1.5 miles from their residence or alternate address to their assigned school.

Kindergarten through 4th grade students will receive a printed bus pass via postal mail. These passes were mailed out on August 24th. You can also look up your student's bus pass information by using their Student ID for the username and date of birth for the password at the link below. This is the same information that students use to log in to their Chromebooks for school.

Please note that Kindergarten and 1st grader students **must** have an older sibling (4th grade or older) or parent present at the bus stop in the afternoon in order to depart from the school bus. If a parent or older sibling is not present, the student will be brought to the Moody School, located at 158 Rogers Street. A driver's license or valid identification must be presented to the staff in order to dismiss the student.

You can use the LPSD "Bus Lookup Tool" using the link below. You will need to use you child's LASID or lunch number along with their birthdate to access this helpful system.

There also is a helpful video that you can watch that will walk you through the process.

**CLICK HERE FOR THE LPSD "BUS LOOKUP TOOL"**

You will need to have your child's LASID or lunch number to access the most up to date bus information for your child. Please keep in mind that this number is also used to log into your child's borrowed device.

## Bus Pass Lookup Tutorial



## NEED INFO? FREQUENTLY ASKED QUESTIONS & ANSWERS



**How can I update my contact information (phone number/email/address)?**

- Go online to the Family Resource Webpage (<https://www.lowell.k12.ma.us/UpdateContactInfo>) and fill out the “contact us” form. Families who don’t have access to the internet can fill out the form in person at the Family Resource Center. If an address change is related to economic factors or housing instability (family moves in with relatives, eviction, hotel/motel, fire or unsheltered, please contact the McKinney Vento Office located at the Family Resource Center in person (151 Merrimack Street), by phone (978-674-4321) or go to the webpage at <https://www.lowell.k12.ma.us/HomelessAssistance>.

**How do I update my emergency contacts?**

- If you were in the school last year we will send a verification sheet out. if you are new we will send home an emergency form to fill out on the first day of school or use the online form found in this newsletter.

**What should I do if my child needs a Chromebook or if my child’s Chromebook needs repairs?**

- Families should contact their school to coordinate the issuing of a new Chromebook or to schedule repairs. After the school year begins, the district will resume its “tech tent” services and will inform families via email, text, and phone once the services resume.

## How do I register my child for the new school year?

- All school registrations are completed online using a computer or laptop. You can access the online application by going to <https://www.lowell.k12.ma.us/SchoolRegistration>. If you only have a mobile device and don't have access to a computer or laptop, you can register in person at the Family Resource Center (151 Merrimack Street). Please call the Family Resource Center if you have any questions (978-674-4321).

## What should I do if I need to register my child(ren) and I don't speak English?

- The Lowell Public Schools is committed to providing translation and interpretation services for families who require assistance in a language other than English. The online registration application and website is translated in Spanish and Portuguese and can be accessed by going to <https://www.lowell.k12.ma.us/SchoolRegistration>. For all other languages, please call Vannak Khin at (978) 328-6782 to arrange services. In-person language interpretation support for registration can be accessed by visiting the Lowell Public Schools at 151 Merrimack Street. Families can also call the Family Resource Center at (978) 674-4321 to make an appointment with a Bilingual Family Liaison.

## How old does my child need to be to enroll in preschool or kindergarten?

- A child must turn 4 years old on or before September 1, 2021, in order to apply for preschool and 5 by September 1 to apply for kindergarten. A family can apply for preschool by going to <https://www.lowell.k12.ma.us/PreschoolRegistration> to fill out an online application or <https://www.lowell.k12.ma.us/KindergartenRegistration> for kindergarten. For registration questions, please call (978) 674-4321.

## How do I apply for a transfer for my child to change schools in the new year?

- Per the 2021-22 School Assignment Policy, all students have the option to request one school transfer per year. Families can apply online by going to <https://www.lowell.k12.ma.us/SchoolTransfer> or can come to the Family Resource Center in-person to complete the application. Transfers are assigned on a space availability basis.

## MEDICAL INFORMATION REMINDER

Any students who have emergency medications (Epi-Pens, inhalers, etc.) or who will receive medication in school must have a medication order from the prescribing physician AND a completed consent form from the City Health Department.




Forms and medication can be dropped off to Nurse Robin any time during the school day. However, it's ideal to drop things off between 9:10 AM - 9:30 AM each day.

Nurse Robin cannot administer ANY medications without a physician's order, including over-the-counter medications. Please make sure that the school nurse is provided refills in advance of any medication supply running out.

If you have any questions, please reach out to Nurse Robin directly,

## 2022-2023 SCHOOL YEAR CALENDAR

Superintendent of Schools-Lowell Public Schools- Lowell, MA 2022-2023 School Year Calendar	
Monday, August 29, 2022	Staff Return to School for Staff Orientation Day
Tuesday, August 30, 2022	Staff Professional Development Day at School Site
Wednesday, August 31, 2022	First Day of School - Grades 1-12
Friday, September 2, 2022	No School Labor Day Recess
Monday, September 5, 2022 *	No School - Labor Day
Tuesday, September 6, 2022	No School for Students - Primary Election - Professional Day for Staff
Wednesday, September 7, 2022	First Day of School - Pre-Kindergarten & Kindergarten
Monday, October 10, 2022 *	No School - Indigenous Peoples' Day
Tuesday, November 8, 2022	No School for Students - Election Day - Professional Day for Staff
Friday, November 11, 2022 *	No School - Veterans' Day Observed
Wednesday, November 23, 2022	Early Dismissal - Thanksgiving Recess
Thursday, November 24, 2022 *	No School - Thanksgiving Day
Friday, November 25, 2022 *	No School - Thanksgiving Recess
Monday, November 28, 2022	Schools Re-Open
Friday, December 23, 2022	Holiday Vacation Begins at the Close of Day
Saturday, December 24, 2022 *	Christmas Eve (Holiday Vacation: Saturday, December 24 - Sunday, January 1, 2023)
Sunday, December 25, 2022	Christmas Day
Monday, December 26, 2022 *	Central Office and Family Resource Office Closed
Friday, December 30, 2022 *	New Year's Eve
Sunday, January 1, 2023	New Year's Day
Monday, January 2, 2023 *	Central Office and Family Resource Office Closed
Tuesday, January 3, 2023	Schools Re-Open
Wednesday, January 11, 2023	Wednesday - Early Release for grades PreK-12
Monday, January 16, 2023 *	No School - Martin Luther King, Jr. Day
Friday, February 17, 2023	Mid-Winter Vacation Begins at the Close of School
Monday, February 20, 2023 *	President's Day [School Vacation: Monday, February 20 - Friday, February 24, 2023]
Monday, February 27, 2023	Monday - Schools Re-Open
Wednesday, March 8, 2023	Wednesday - Early Release for grades PreK-12
Friday, April 7, 2023 *	No School - Good Friday
Friday, April 14, 2023	Spring Vacation Begins at the Close of School
Monday, April 17, 2023 *	Patriot's Day - [School Vacation: Monday, April 17 - Friday, April 21, 2023]
Monday, April 24, 2023	Schools Re-Open
Monday, May 29, 2023 *	No School - Memorial Day
Thursday, June 15, 2023	180 <sup>th</sup> School Day
Monday, June 19, 2023 *	Juneteenth
Friday, June 23, 2023	185 <sup>th</sup> School Day [Includes five (5) Snow Days]



Approved by the Lowell School Committee at their meeting of May 4, 2022

\* Central Administration, Family Resource Center will be closed in observance of a holiday

Number of School Days Per Month	
August 1	January 20
September 19	February 15
October 20	March 23
November 18	April 14
December 17	May 22
	June 11

[CLICK TO ACCESS THE 2022-2023 SCHOOL CALENDAR](#)

FEBRUARY & EARLY MARCH BREAKFAST/LUNCH MENU

<div>  <p><b>February Elementary Breakfast Menu</b></p> <p>Check out <a href="https://lowellk12ma.nutrislice.com/">https://lowellk12ma.nutrislice.com/</a> for Menu's, Nutrition Education &amp; Monthly Promotions! Questions or concerns please contact <a href="mailto:foodservices@lowell.k12.ma.us">foodservices@lowell.k12.ma.us</a></p> <p><b>All Breakfast items are whole grain. Offered Daily: 1 % and Skim Milk and Fresh Fruit All Breakfast is provided free for all students. Menu is subject to change.</b></p> <p>aramark <small>This institution is an equal opportunity institution.</small></p> </div>					<b>30</b> Pumpkin Bread Oatmeal Raisin Round Served with Orange, Pear, and Milk	<b>31</b> Blueberry Muffin Benefit Bar Served with Juice, Pear and Milk	<b>1</b> Cinnamon Sugar Donut Assorted Cereal Bowl with Graham Cracker Served with Apple, Orange, and Milk	<b>2</b> Blueberry Waffle with Maple Syrup Nature Valley Oatmeal Round Served with Juice, Pear and Milk	<b>3</b> Bagel with Cream Cheese Assorted Cereal Bar with Graham Cracker Served with Banana, Apple, and Milk
					<b>6</b> Banana Bread Cranberry, Orange Oatmeal Round Served with Orange and Milk	<b>7</b> Double Chocolate Chip Muffin Benefit Bar Served with Juice, Pear and Milk	<b>8</b> Bacon, Egg and Cheese Bagel Sandwich Assorted Cereal Bowl with Graham Cracker Served with Apple, Orange, and Milk	<b>9</b> Blueberry Waffle with Maple Syrup Nature Valley Oatmeal Round Served with Juice, Pear and Milk	<b>10</b> Bagel with Cream Cheese Assorted Cereal Bar with Graham Cracker Served with Banana, Apple, and Milk
					<b>13</b> Pumpkin Bread Oatmeal Raisin Round Served with Orange, Pear and Milk	<b>14</b> Blueberry Muffin Benefit Bar Served with Juice, Pear and Milk	<b>15</b> Cinnamon Sugar Donut Assorted Cereal Bowl with Graham Cracker Served with Apple, Orange, and Milk	<b>16</b> Blueberry Waffle with Maple Syrup Nature Valley Oatmeal Round Served with Juice, Pear and Milk	<b>17</b> Bagel with Cream Cheese Assorted Cereal Bar with Graham Cracker Served with Banana, Apple, and Milk
					<b>20</b>	<b>21</b>	<b>22</b>	<b>23</b>	<b>24</b>
					February Vacation				
					<b>27</b> Pumpkin Bread Oatmeal Raisin Round Served with Orange, Pear, and Milk	<b>28</b> Double Chocolate Chip Muffin Benefit Bar Served with Juice, Pear and Milk	<b>1</b> Sausage, Egg and Cheese Bagel Sandwich Assorted Cereal Bowl with Graham Cracker Served with Apple, Orange, and Milk	<b>2</b> Blueberry Waffle with Maple Syrup Nature Valley Oatmeal Round Served with Juice, Pear and Milk	<b>3</b> Bagel with Cream Cheese Assorted Cereal Bar with Graham Cracker Served with Banana, Apple, and Milk

# FEBRUARY 2023

## Elementary

**Breakfast and Lunch is Free for all Students!**  
Our menu consists of Whole Grains, Fresh Fruits and Vegetables.  
Students must take a fruit and/or vegetable with each lunch.

All Meals served with milk.

Sunbutter and Jelly and Vegetarian Meals served daily.

In accordance with Federal Law and U.S. Department of Agriculture policy, this institution is prohibited from discriminating on the basis of race, color, national origin, sex, age, or disability. To file a complaint of discrimination, write USDA, Director, Office of Adjudication, 1400 Independence Avenue, SW Washington, D.C. 20250-9410 or call toll free (866) 632-9992 (Voice). Individuals who are hearing impaired or have speech disabilities may contact USDA through the Federal Relay Service at (800) 877-8339; or (800) 845-6136 (Spanish). USDA is an equal opportunity provider and employer.

MONDAY FRIDAY	TUESDAY	WEDNESDAY	THURSDAY
<b>30</b> Chana Masala V with Tzatziki Sauce V Tomato Cucumber Salad V Hamburger & Cheeseburger -Chicken Ranch Salad with Flatbread LG -Ham and Cheese Sandwich -Broccoli & Carrots LG -Apples & Peaches -Chicken & Waffles with Maple Gravy -Pizza Crunchers V -Cobb Salad with Flatbread LG -Tuna Salad Sandwich on a Bulkie Roll -Maple Carrots & Green Beans -Apples & Pears -Country Chicken Bowl with Corn Muffin -Country Vegetarian Nugget Bowl with Flatbread V -Chicken Parm Sub -Mediterranean Hummus Salad with Flatbread LG V -Italian Sub -Carrots LG & Corn -Apples & Peaches	<b>31</b> -Tater Tot Beef Natcho (Trichon) -Tater Tot Black Bean Natcho V -Crispy Chicken Sandwich & Spicy Crispy Chicken Sandwich -Pizza Platter -Chicken Caesar Wrap -Kickin' Beans & Broccoli -Clementines & Apples -Chicken Taco with 6" Tortilla Wrap -Hamburger & Cheeseburger -Black Bean Burger V -Pretzel Power Pack V -Turkey and Cheese Sandwich -Kickin' Beans & Broccoli -Oranges & Apples <b>Happy Valentine's Day</b> -Beef Nachos with Tortilla Chips V -Kickin' Bean Nachos with Tortilla Chips V -Cheese Quesadilla V -Bagel Power Pack V -Red Beet Hummus Platter -Kickin' Beans & Broccoli -Oranges & Strawberries	-Chicken and Vegetable Dumplings with Vegetables -General Tso Tofu Steak with Rice V -Chicken Parm Sub -Chef Salad with Flatbread LG -Ham and Cheese Sandwich -Cucumber & Carrots LG -Bananas & Apples -Chicken Parmesan with Penne -Chicken Tenders with a Dinner Roll -Mediterranean Hummus Salad with Flatbread LG V -Tuna Salad Sandwich on a Bulkie Roll -Cucumber & Carrots LG -Bananas & Apples -Penne Bolognese with Parmesan -Crispy Chicken Sandwich & Spicy Crispy Chicken Sandwich -Chef Salad with Flatbread LG -Italian Sub -Cucumber & Carrots LG -Bananas & Apples	<b>1</b> -Shepherd's Pie with a Dinner Roll -Fish and "Chips" with a Dinner Roll -Vegetarian Nuggets with a Dinner Roll V -Pizza Platter -Chicken Caesar Wrap -Green Beans & Tater Tots -Pears & Fresh Fruit Cup <b>2</b> -Shepherd's Pie with a Dinner Roll -Fish and "Chips" with a Dinner Roll -Vegetarian Nuggets with a Dinner Roll V -Pizza Platter -Chicken Caesar Wrap -Green Beans & Tater Tots -Pears & Fresh Fruit Cup <b>3</b> -BBQ Chicken Pizza -Chicken Ranch Salad with Flatbread LG -Ham and Cheese Sandwich -Cucumber & Carrots LG -Bananas & Apples <b>4</b> -BBQ Chicken Pizza -Chicken Ranch Salad with Flatbread LG -Ham and Cheese Sandwich -Cucumber & Carrots LG -Bananas & Apples <b>5</b> -BBQ Chicken Pizza -Chicken Ranch Salad with Flatbread LG -Ham and Cheese Sandwich -Cucumber & Carrots LG -Bananas & Apples <b>6</b> -BBQ Chicken Pizza -Chicken Ranch Salad with Flatbread LG -Ham and Cheese Sandwich -Cucumber & Carrots LG -Bananas & Apples <b>7</b> -BBQ Chicken Pizza -Chicken Ranch Salad with Flatbread LG -Ham and Cheese Sandwich -Cucumber & Carrots LG -Bananas & Apples <b>8</b> -BBQ Chicken Pizza -Chicken Ranch Salad with Flatbread LG -Ham and Cheese Sandwich -Cucumber & Carrots LG -Bananas & Apples <b>9</b> -BBQ Chicken Pizza -Chicken Ranch Salad with Flatbread LG -Ham and Cheese Sandwich -Cucumber & Carrots LG -Bananas & Apples <b>10</b> -BBQ Chicken Pizza -Chicken Ranch Salad with Flatbread LG -Ham and Cheese Sandwich -Cucumber & Carrots LG -Bananas & Apples <b>11</b> -BBQ Chicken Pizza -Chicken Ranch Salad with Flatbread LG -Ham and Cheese Sandwich -Cucumber & Carrots LG -Bananas & Apples <b>12</b> -BBQ Chicken Pizza -Chicken Ranch Salad with Flatbread LG -Ham and Cheese Sandwich -Cucumber & Carrots LG -Bananas & Apples <b>13</b> -BBQ Chicken Pizza -Chicken Ranch Salad with Flatbread LG -Ham and Cheese Sandwich -Cucumber & Carrots LG -Bananas & Apples <b>14</b> -BBQ Chicken Pizza -Chicken Ranch Salad with Flatbread LG -Ham and Cheese Sandwich -Cucumber & Carrots LG -Bananas & Apples <b>15</b> -BBQ Chicken Pizza -Chicken Ranch Salad with Flatbread LG -Ham and Cheese Sandwich -Cucumber & Carrots LG -Bananas & Apples <b>16</b> -BBQ Chicken Pizza -Chicken Ranch Salad with Flatbread LG -Ham and Cheese Sandwich -Cucumber & Carrots LG -Bananas & Apples <b>17</b> -BBQ Chicken Pizza -Chicken Ranch Salad with Flatbread LG -Ham and Cheese Sandwich -Cucumber & Carrots LG -Bananas & Apples <b>18</b> -BBQ Chicken Pizza -Chicken Ranch Salad with Flatbread LG -Ham and Cheese Sandwich -Cucumber & Carrots LG -Bananas & Apples <b>19</b> -BBQ Chicken Pizza -Chicken Ranch Salad with Flatbread LG -Ham and Cheese Sandwich -Cucumber & Carrots LG -Bananas & Apples <b>20</b> -BBQ Chicken Pizza -Chicken Ranch Salad with Flatbread LG -Ham and Cheese Sandwich -Cucumber & Carrots LG -Bananas & Apples <b>21</b> -BBQ Chicken Pizza -Chicken Ranch Salad with Flatbread LG -Ham and Cheese Sandwich -Cucumber & Carrots LG -Bananas & Apples <b>22</b> -BBQ Chicken Pizza -Chicken Ranch Salad with Flatbread LG -Ham and Cheese Sandwich -Cucumber & Carrots LG -Bananas & Apples <b>23</b> -BBQ Chicken Pizza -Chicken Ranch Salad with Flatbread LG -Ham and Cheese Sandwich -Cucumber & Carrots LG -Bananas & Apples <b>24</b> -BBQ Chicken Pizza -Chicken Ranch Salad with Flatbread LG -Ham and Cheese Sandwich -Cucumber & Carrots LG -Bananas & Apples <b>25</b> -BBQ Chicken Pizza -Chicken Ranch Salad with Flatbread LG -Ham and Cheese Sandwich -Cucumber & Carrots LG -Bananas & Apples <b>26</b> -BBQ Chicken Pizza -Chicken Ranch Salad with Flatbread LG -Ham and Cheese Sandwich -Cucumber & Carrots LG -Bananas & Apples <b>27</b> -BBQ Chicken Pizza -Chicken Ranch Salad with Flatbread LG -Ham and Cheese Sandwich -Cucumber & Carrots LG -Bananas & Apples <b>28</b> -BBQ Chicken Pizza -Chicken Ranch Salad with Flatbread LG -Ham and Cheese Sandwich -Cucumber & Carrots LG -Bananas & Apples <b>29</b> -BBQ Chicken Pizza -Chicken Ranch Salad with Flatbread LG -Ham and Cheese Sandwich -Cucumber & Carrots LG -Bananas & Apples <b>30</b> -BBQ Chicken Pizza -Chicken Ranch Salad with Flatbread LG -Ham and Cheese Sandwich -Cucumber & Carrots LG -Bananas & Apples <b>31</b> -BBQ Chicken Pizza -Chicken Ranch Salad with Flatbread LG -Ham and Cheese Sandwich -Cucumber & Carrots LG -Bananas & Apples

# February Vacation



February Breakfast Menu.pdf

[Download](#)  
444.4 KB



February Lunch Menu.pdf

[Download](#)  
304.9 KB

## PARENT & FAMILY RESOURCES

# PRESCHOOL REGISTRATION INFORMATION



## Preschool Registration 2023-2024

**February 1 - April 24**  
**Register Online**  
[www.lowell.k12.ma.us/preschoolregistration](http://www.lowell.k12.ma.us/preschoolregistration)  
**OR**  
at the Family Resource Center  
151 Merrimack St.

- Social Skills
- Language & Literacy Development
- Explore Math, Science & Social Studies

**Questions?**  
Laurie Carney  
[lauriecarney@lowell.k12.ma.us](mailto:lauriecarney@lowell.k12.ma.us)  
978-446-7000  
  
Laura Valdez  
[lvaldez@lowell.k12.ma.us](mailto:lvaldez@lowell.k12.ma.us)  
978-674-2065



**Children must be 4 by Sept. 1**  
**Transportation not provided**  
**Full-day offered at Bartlett, Cardinal, Greenhalge & Murkland only**

**Information on Kindergarten Registration Coming Soon**

# WINTER READING CHALLENGE 2023

# Winter Reading Challenge 2023



## January 23—March 11

For Children Grade 5 and Younger\*

Sign up and track your progress online via Beanstack  
(<https://lowelllibrary.beanstack.org/reader365>) or contact  
the Children's Department at 978-674-1529.

Earn online badges and online raffle tickets by reading and  
doing activities. The more you do, the more tickets you earn  
for our end of Winter Reading Raffle. Prizes include a Lego  
Safari Wildlife Treehouse Kit, a Play-Doh Pizza Kitchen Set,  
and a cozy Owl Squishmallow.

*\*Being Read to Counts!*

Pollard Memorial Library  
401 Merrimack St., Lowell, MA 01852  
978-674-1529    [www.LowellLibrary.org](http://www.LowellLibrary.org)

## SNAP BENEFITS FOR FAMILIES

# BOOST YOUR FOOD BUDGET.

Start with **SNAP** and get help paying for food—for you, and anyone you're responsible for.

**GettingSNAP.org**

WITH SNAP (SUPPLEMENTAL NUTRITION ASSISTANCE PROGRAM) BENEFITS, YOU CAN:

- **Boost your grocery budget with monthly funds** you can use at locations of your choice, statewide.
- **Automatically qualify your kids for free school meals**, no application needed.
- **Automatically qualify to participate in the Healthy Incentive Program (HIP)**, which lets you earn additional money to spend on groceries when you purchase fruits and vegetables from your local participating HIP vendors.
- **Shop for the food you like**, that meets your dietary needs, allergy restrictions, and cultural preferences.

If you're having trouble paying for groceries—whether or not you're working—you could be eligible for SNAP. Visit **GettingSNAP.org** or call **1-800-645-8333** for help.





## WE'RE HERE FOR YOU.

Call our **FoodSource Hotline** at **1-800-645-8333** to find out if you qualify for SNAP with help from our trained counselors.

**SNAP FACTS**  
SNAP is the Supplemental Nutrition Assistance Program, or, in other words, money for food. If you apply and are eligible, you are guaranteed to receive the benefits—in the form of a monthly cash stipend on an EBT card, that can be used just like a debit card for food shopping.

**AM I ELIGIBLE?**  
If you could use help affording food, you could be! SNAP can help whether you're working or currently unemployed. All types of people, from single adults to families to seniors, receive SNAP benefits—it's a benefit meant to supplement your grocery budget. Call our FoodSource Hotline or visit [StartWithSnap.org](http://StartWithSnap.org) to find out more.

**WHAT IF I'M NOT A U.S. CITIZEN?**  
Go on and reach out to us via our FoodSource Hotline (1-800-645-8333). Many non-citizens are eligible for SNAP.

**YOU'VE CONVINCED ME. SO HOW DO I APPLY?**  
Be prepped with your personal information, such as your Social Security number (if you have one), your birthdate, mailing address, phone number, income, and expenses. Then, you can:

- Call our FoodSource Hotline at 1-800-645-8333
- Apply on your own at [dtaconnect.eohhs.mass.gov/apply](http://dtaconnect.eohhs.mass.gov/apply)
- Or download a paper application from [mass.gov/SNAP](http://mass.gov/SNAP), or call our FoodSource Hotline to request one to be sent in the mail

If you're having trouble paying for groceries—whether or not you're working—you could be eligible for SNAP. Visit [GettingSNAP.org](http://GettingSNAP.org) or call **1-800-645-8333** for help.



**PROJECT  
BREAD**



**SNAP** Supplemental Nutrition Assistance Program

## MENTAL HEALTH SUPPORT AVAILABLE

# IT'S OKAY TO ASK FOR HELP



Care Solace connects students, staff, and their families to care. At no cost to you, Care Solace will quickly and confidentially find available mental health and substance use providers matched to your needs.

Find the right help at the right time.



## **24/7/365 MULTILINGUAL SUPPORT**

A multilingual team is available 24/7/365 to help you understand options, call providers on your behalf, and schedule an appointment.



## **CARE REGARDLESS OF INSURANCE**

Connect to care with any coverage including Medicaid, Medicare, and sliding scale options for those without insurance.



## **EASY ACCESS TO CARE**

Use Care Match, the self-serve website, to find a provider on your own.

## **GET CONNECTED TO CARE TODAY**

**888-515-0595**

[caresolace.com/](https://caresolace.com/)



Please note: Care Solace is not an emergency response service or mental health services provider. In the event of a life threatening emergency, call 9-1-1 or the National Suicide Hotline 9-8-8.

## EMERGENCY CONTACT FORM: 2022-2023

Get a jump start now and complete your emergency contact form for the 2022-2023 academic school year?

We have made it really easy for you to complete this important task. You can access the online form below. When you complete this form, it is immediately sent to McAvinnue and we will print it out for our records.

You don't need to come to the school to complete this form...you can do it right on your phone, tablet, or computer!



If you have any questions, please reach out to Mrs. De La Luz at [adelaluz@lowell.k12.ma.us](mailto:adelaluz@lowell.k12.ma.us) or contact the Main Office at McAvinnue for support!



## Emergency Form

## Formulario de Emergencia

## Formulário de Emergência 2022-2023



[Sign in to Google](#) to save your progress. [Learn more](#)

## MCAVINNUE SPIRIT GEAR BY PREP SPORTSWEAR

We have an online store if you wish to order any McAvinnue gear! It is open 24 hours per day and there is no due date for orders. Anytime you want to order...on any day!

The company is Prep Sportswear and has been reliable with solid product quality from reputable brands.



**There is a 30% off deal occurring now on all items! This is a major discount if you are interested in purchasing McAvinnue merchandise.**

We are also exploring additional local options to purchase McAvinnue gear. Stay tuned for more information in the month of September.

To access our current online store for McAvinnue spirit gear, please click the link below.

## CLICK TO ACCESS PREP SPORTSWEAR SPIRIT GEAR

### MILL CITY GROWS WINTER MARKETS



Don't let winter stop you from eating fresh local fruits and vegetables! Fresh, locally grown produce is now available for purchase through April 2023 at Mill City Grows' (MCG) Indoor Winter Mobile Markets at UMass Lowell University Crossing and MCG's ROOT Kitchen.

Shoppers can enjoy a variety of seasonal vegetables grown on farm sites in the City of Lowell as well as fresh produce sourced from area farmers and growers. Mill City Grows Mobile Markets accept SNAP/EBT, cash, credit, debit, and Mill City Grows E-Gift Cards (a great stocking stuffer: <https://squareup.com/gift/A6CVNHCK5PKAE/order>) for payment. All markets also accept HIP (Healthy Incentives Program), a SNAP benefit that provides \$1 back for every dollar spent on fruits and vegetables purchased directly from a HIP authorized farm or vendor. SNAP customers are encouraged to ask about HIP discounts while shopping.

The full Indoor Winter Mobile Market schedule can be viewed and downloaded at <https://www.millcitygrows.org/mobile-markets/>, including multilingual schedules in Khmer, Spanish, Vietnamese, Portuguese, Chinese, Haitian Creole, and Pashto. Please follow [Mill City Grows](#) on Facebook and Instagram for all scheduling updates or call 978-455-2620. The full schedule is listed below:

#### 2022-2023 MILL CITY GROWS INDOOR WINTER MOBILE MARKET SCHEDULE

University Crossing Atrium at UMass Lowell

220 Pawtucket Street, Lowell

Monthly on Wednesdays from 2 PM – 4 PM

- **March 15, 2023**
- **April 19, 2023**

\* Parking is available at the Pawtucket Metered Lot across from University Crossing at 219 Pawtucket Street.

#### Mill City Grows ROOT Kitchen

19 Hall Street, Lowell

Bi-weekly on Thursdays from 2 PM – 5 PM

- **March 2 & 16, 2023**



**Fresh,  
seasonal  
produce!**

# **Indoor Winter Farmers' Markets**

Select Wednesdays & Thursdays  
Starting November 16

Shop fresh and local at UMass Lowell's  
University Crossing and at  
Mill City Grows' ROOT Kitchen!

**Use your SNAP/EBT and HIP benefits**



Fresh,  
seasonal  
produce!

# ROOT Kitchen at Mill City Grows

Bi-weekly on Thursdays  
2pm - 5pm

2022	2023
November 17	January 5 & 19
December 1 & 15	February 2 & 16
	March 2 & 16

19 Hall Street

## COMMUNITY CONNECTIONS & OPPORTUNITIES



# BASEBALL & SOFTBALL LEAGUES!

This unseasonably warm weather has us thinking about . . . baseball and softball! Lowell's first citywide recreation baseball and softball league is now accepting registration for the spring. See more info below and at [www.lybsl.org](http://www.lybsl.org) (their website can be translated into multiple languages). Play Ball!

## BASEBALL & SOFTBALL REC LEAGUE



CLICK ON YOUR PARK BELOW



OR REGISTER NOW AT:  
**WWW.LYBSL.ORG**



LOWELL'S FIRST CITYWIDE BASEBALL AND SOFTBALL REC LEAGUE

T-BALL AGES: 4/5  
INSTRUCTIONAL/COACH PITCH AGES: 5/6

BASEBALL AGE GROUPS:	SOFTBALL AGE GROUPS:
7/8, 9/10, 11/12 & 13/15	8U, 10U, 12U & 16U



Our website can be translated into multiple languages

- Nuestro sitio web se puede traducir a varios idiomas
- Nosso site pode ser traduzido para vários idiomas
- គេហទំព័ររបស់យើងអាចបកប្រែជាច្រើនភាសា

## WINTER PLAYGROUPS

The Lowell Public School's Early Childhood Department offers a series of Winter playgroups for kids under the age of 5 and their families.

Register here: <https://docs.google.com/.../1FAIpQLScox9aCS.../viewform>



**LOWELL**  
PUBLIC SCHOOLS  
Early Childhood Department  
Coordinated Family and Community Engagement

**STARTS THE WEEK OF JAN. 9, 2023**

# Winter Playgroups

Lowell Public School's CFCE program provides weekly playgroups for young children under the age of five and their families! Join the fun and invite your friends! Sing songs, read books, engage in activities and share ideas with peers.

**Monday**  
Jan. 9 through April. 06,  
Facilitators: LPS  
Location: Pollard Memorial Library, 401 Merrimack St.  
10:00-11:00 AM  
Language Support: English, Khmer



**Tuesday**  
Jan. 10 through April. 04,  
Facilitators: LPS  
Location: Housing Authority, 580 Chelmsford St.  
10:00-11:00 AM  
Language Support: English, Khmer



**Tuesdays and Thursdays**  
Jan. 10 through April. 06,  
Facilitators: LPS  
Location: YMCA, 35 YMCA Dr.  
10:00-11:00 AM  
Language Support: English, Spanish, Khmer



**Wednesday**  
Jan. 11 through April. 05,  
Facilitators: LPS  
Location: St. Rita's Church, 158 Mammoth Rd.  
10:00-11:00 AM  
Language Support: English, Spanish



**Friday**  
Jan. 13 through March 31,  
Facilitators: LPS  
Location: St. Rita's Church, 158 Mammoth Rd.  
10:00-11:00 AM  
Language Support: English, Spanish, Khmer



**Friday**  
Jan. 13 through March 31,  
Facilitators: LPS and Anne Sullivan  
Location: Pollard Memorial Library, 401 Merrimack St.  
10:00-11:00 AM  
Language Support: English, Spanish



**CLICK HERE TO REGISTER**


For questions call, Laura Valdez  
978-674-2065.  
Visit the Lowell Public Schools' calendar and Early Childhood homepage for more information.  
<http://www.lowell.k12.ma.us>

Scan code to register

Lowell Public Schools CFCE program is funded by the Coordinated Family & Community Engagement grant awarded to Lowell Public Schools by the Department of Early Education and Care.




## 6-WEEK ENGLISH CLASSES




# Learn English



Lowell Public Schools' Family Leadership Institute is offering FREE conversational English classes to LPS parents/guardians to be held at Lowell High, the Moody, Greenhalge, and Robinson Schools.

**Monday/Wednesday 6 p.m. - 8 p.m.**  
OR  
**Tuesday/Thursday 6 p.m.- 8 p.m.**



Interested?  
Scan the QR code



Questions? Contact Family Leadership Institute Director Zoe Dzineku  
Tuesday 9 a.m. -11 a.m.; Wednesday and Thursday 4 p.m. - 6 p.m. at :  
 [zdzineku@lowell.k12.ma.us](mailto:zdzineku@lowell.k12.ma.us)
 978-930-2913



## Aprendiendo Inglés

6 semanas de Clases Empezando el 6 de febrero

El Instituto de Liderazgo para las Familias de las Escuelas Públicas de Lowell están ofreciendo clases de inglés conversacional GRATUITAS a los padres/tutores de LPS se llevarán a cabo en las escuelas Lowell High, Moody, Greenhalge y Robinson.

**Lunes/Miércoles 6 p.m. - 8 p.m.**  
O  
**Martes/Jueves 6 p.m.- 8 p.m.**



¿Interesado?  
Escanea el código QR



preguntas? Comuníquese con la Directora del Instituto de Liderazgo para las Familias Zoe Dzineku.



## រៀន អង់គ្លេស

សាលាសាធារណៈក្រុងឡូអែល

ប្រាក់រៀនមានរយៈពេល 6-សប្តាហ៍ ចាប់ផ្តើមនៅខែកុម្ភៈ ថ្ងៃទី 6

ស្ថាប័នភាពជាអ្នកដឹកនាំគ្រួសារឬអាណាព្យាបាលសិស្ស នឹងផ្តល់ជូនថ្នាក់សន្ទនាភាសាអង់គ្លេសមួយចំនួនសម្រាប់មាតាបិតា ឬអាណាព្យាបាលសិស្សនៃសាលាសាធារណៈ ក្រុងឡូអែល (LSP) ដែលនឹងប្រារព្ធឡើងនៅ វិទ្យាល័យឡូអែល, នៅសាលា Moody, សាលា Greenhalge, និងសាលា Robinson។


**ថ្ងៃច័ន្ទ /ថ្ងៃពុធ ម៉ោង 6 - 8 ល្ងាច**  
ឬ  
**ថ្ងៃអង្គារ/ថ្ងៃព្រហស្បតិ៍ម៉ោង 6 - 8 ល្ងាច**



បើចាប់អារម្មណ៍?  
សូមធ្វើការស្កេនកូដ QR code



លេខទូរស័ព្ទ: 978-930-2913 ឬទូរសារ: 978-930-2913 ឬទូរសារ: 978-930-2913




## Aprenda Ingles!

6-Semanas de Curso !  
Aulas Inician 6 de Fevereiro


O Instituto de Lideranca Familiar das Escolas Publicas de Lowell esta oferecendo aulas GRATUITAS de Conversacao em Ingles para pais e responsaveis por alunos da LPS.

As aulas serao oferecidas na Lowell High School, nas escolas Moody, Greenhalge, e Robinson.

**Segunda & Quarta 6 p.m. - 8 p.m.**  
OU  
**Terca & Quinta 6 p.m.- 8 p.m.**



Interessado?  
Escaneie o QR code



Dúvidas? Entre em contato com a Diretora do Instituto de Lideranca Familiar, Zoe Dzineku.

## COMMUNITY RESOURCES & DAYCARE OPTIONS FOR FAMILIES

Looking for before or after school daycare options for your child? Here is a short list of options and information for your consideration.

Here is a list of daycare options in Lowell:

- **Community Team Work (CTI)** (978) 454-5100
  - Families who are already enrolled in a CTI program...
    - Call or text school-age coordinators to request a slot
      - Billy 978-995-0028, [wma@commteam.org](mailto:wma@commteam.org)
      - Karen 978-729-7216, [kshannon@commteam.org](mailto:kshannon@commteam.org)
  - Families who are not enrolled in a CTI program
    - If you've filled out a CTI application in the past...
      - Contact Karen (978) 729-7216, [kshannon@commteam.org](mailto:kshannon@commteam.org) to see if where you are on the waitlist (if there is a waitlist)
    - If you've never filled out a CTI application...
      - Fill out an application at 17 Kirk St., 126 Phoenix Ave
      - Or call the main CTI number (978) 454-5100 to request an email version of the application.
- **YMCA:** (978) 454-7825; 1 YMCA Dr in Lowell
  - Karen Espinola is the school-age director
    - Fill out a application online or at the YMCA to request a slot
  - Debbie Doben is the preschool director if your child is preschool age
- **Family Childcare:** Call programs to see if they have openings near you
  - Bethel Family Childcare (978) 458-6577
  - Clarendon Family Childcare (978) 454-3026
  - Child Development and Learning (CDE) (978) 275-2843
  - ACRE Family Childcare (978) 937-5899
  - CTI: See above contact information
- **Girls Inc:** (978) 458-6529, 220; Worthen St. in Lowell
  - Accept girls ages 5-14 years old
  - Accept Child Care Circuit vouchers, DCF vouchers, and private pay (income-based, sliding scale)
  - Call Pam Lerocque (Director of Finance & Administration) to check on openings
- **Boys and Girls Club:** (978) 458-4526; 657 Middlesex St in Lowell
  - School-age openings for after-school
  - Teens who are working with the Department of Children and Families can call BGC or DCF to see if they're eligible

## LOCAL FOOD SUPPORT

Do you need support with food options for your family. No need to worry...there are many local groups that can offer support for you during your time of need.

Click the link below for a list of local food pantries that are willing to help.



You can also reach out to Mrs. De La Luz, McAvinnue's Social Worker, for support navigating these and other options.



Greater-Lowell-Area-Pantry-List 8-27-20 (1).xlsx

Download

15.3 KB

## MCAVINNUE'S FAMILY READ-A-LOUD

### "A TURKEY'S VALENTINE SURPRISE"

Turkey's Valentine Surprise - Kids Books Read Aloud



## MCAVINNUE'S SCHOOL WEBSITE

Check out our school website where you can find a wealth of information including school news, calendars, and other events.

Please visit our website at:

<https://www.lowell.k12.ma.us/mcavinnue>



## FOLLOW MCAVINNUE ON SOCIAL MEDIA

You can follow McAvinnue on social media at the following sites! We update things daily and this is a great way to stay in touch with all of the amazing things that are happening inside and

out of "the best school we all know"!

- FaceBook: <https://www.facebook.com/McAvinnueElementarySchool>
- Twitter: <https://twitter.com/McAvinnueLPS>
- Instagram: <http://instagram.com/mcavinnueelementarylps>
- YouTube: [https://www.youtube.com/channel/UC7hxiBuRjqjgASI\\_RLMIeQ](https://www.youtube.com/channel/UC7hxiBuRjqjgASI_RLMIeQ)



## OUR VISION

Facebook @McAvinnueLPS

McAvinnue Elementary School is a place...where there are high expectations, where students are academically engaged, where instruction is guided by a systematic approach to examine data, where there is a multi-tiered system of support, and where a responsive environment that fosters social emotional connections between faculty and students prevails.

#McAvinnuePride #BeTheDifference #NextLevel

131 Mammoth Road, Lowell, ...

mdomina@lowell.k12.ma.us

(978) 937-2871

lowell.k12.ma.us/Domain/21



